



1. Unpack the unit

- A. Remove unit from box. Check for any signs of concealed damage. Be sure all optional brackets have been included. Contact Wine Guardian immediately if components are missing or unit has been damaged in shipping.



Fig. A



Fig. B.

2. Installing Integrated humidifier

- A. Turn the Wine Guardian ON/OFF switch to the OFF position. (Fig. A)
- B. Remove side access cover at the evaporator section of unit (section with supply and return ductwork to wine room). (Fig. B)
- C. Remove the humidifier adapter plate from the humidifier box and secure it to the side access opening using the eight (8) machine screws provided with the humidifier kit. (Fig. C)
- D. Slide the humidifier onto the studs located on the adapter plate and secure using the eight (8) nuts provided with humidifier kit. (Fig. D)
- E. Attach 1/4" (0.6cm) water supply line at top of humidifier. (Fig. E)
- F. Attach 1/2" (1.3cm) drain line at bottom of humidifier. (Fig. F)
- G. Plug in power/control wire to Wine Guardian unit as shown at main control panel. (Fig. G)
- H. Proceed to Step 6 Controller Set up.



Fig. C.



Fig. D.



Fig. E.



Fig. F.



Fig. G



Fig. A



Fig. B

3. Install Freestanding humidifier—Through-the-wall or within racking

- A. Mark the opening for a 16" x 14.5" clearance. (Fig. A)
- B. Cut opening in wall or provide sufficient opening within racking system to accommodate the humidifier. (Fig. B)
- C. Remove the humidifier front cover plate by removing two screws located at the base of the cover plate and sliding the cover up and off of the two plastic tabs at the top of the unit. (Fig. C)
- D. Secure the through wall bracket to the perimeter of the opening at the pre-drilled locations on the adapter using the screws supplied with the kit. (Fig. D)
- E. Attach 1/4" (0.6cm) water line at top of humidifier. (Fig. E)
- F. Attach 1/2" (1.3cm) drain line at bottom of humidifier. **Note: Water supply line and drain line should be routed through the back side of the opening or behind the racking prior to humidifier install. Attach to humidifier prior to step G below.** (Fig. F)
- G. Slide the humidifier through the bracket and attach at the side mounting locations. (Fig. G, H)
- H. Re-install the humidifier front cover plate by sliding the cover over the two top plastic tabs and securing at the bottom of the humidifier with two screws. (Fig. I, J)
- I. Plug in power/control wire to Wine Guardian unit as shown at main control panel. (Fig. K)
- J. Proceed to Step 6—controller set up.



Fig. C

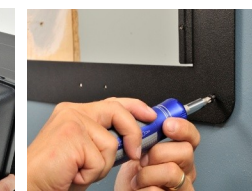


Fig. D



Fig. E.



Fig. F

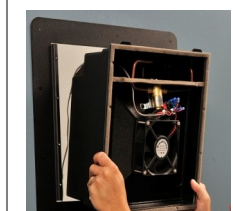


Fig. G



Fig. H

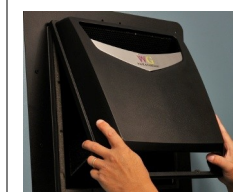


Fig. I



Fig. J

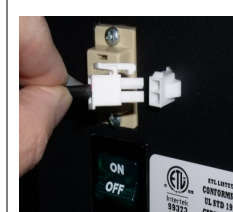


Fig. K



Fig. A

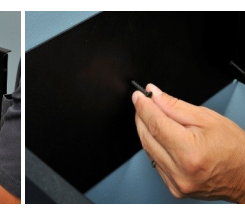


Fig. B

4. Install Freestanding Humidifier—Surface Mount

- A. Determine mounting location for the humidifier within the wine cellar ensuring the location has sufficient access for water supply line, drain line, power cord and service. (Fig. A)
- B. Place the mounting bracket at the desired location and mark the holes required to mount the bracket to the wall. (Fig. A)
- C. Attach bracket to wall using screws provided within humidifier. **Note: Wall anchors may be required depending on wall construction and stud placement.** (Fig. B)
- D. Remove the humidifier front cover plate by removing two screws located at the base of the cover plate and sliding the cover up and off of the two plastic tabs at the top of the unit. (Fig. C,D)
- E. Attach 1/4 (0.6cm) water line at top of humidifier. (Fig. E)
- F. Attach 1/2" (1.3cm) drain line at bottom of humidifier. **Note: Water supply line and drain line should be routed at the back side of the unit between the mounting bracket and humidifier chassis. Attach to humidifier prior to step Step G below.**
- G. Slide the humidifier through the bracket and attach at the side mounting locations. (Fig. G,H)
- H. Re-install the humidifier front cover plate by sliding the cover over the two top plastic tabs and securing at the bottom of the humidifier with two screws. (Fig. I, J)
- I. Plug in power/control wire to Wine Guardian unit as shown at main control panel. (Fig. K)
- J. Proceed to Step 6 - Controller set-up.



Fig. C



Fig. D



Fig. E



Fig. F



Fig. G



Fig. H



Fig. I



Fig. J

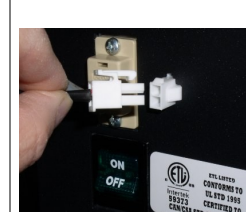


Fig. K





Fig. A



Fig. B

5. Installing Freestanding Humidifier—with power cord and humidistat

- A. Follow Step 3 (TTW or within racking) or Step 4 (surface mount), A-H.
- B. Plug power adapter into 120 volt/1 phase/60 hertz receptacle. (Fig. A)
- C. Mount independent humidistat within wine room mid-point on wall or racking in an area that has sufficient access. (Fig. B)
- D. Refer to Humidistat Operations Manual for additional information
- E. Installation is complete.

6. Controller set-up instructions

- A. Locate the Wine Guardian remote interface controller within the wine cellar or proceed to the Wine Guardian Through-the-Wall (TTW) main control panel. (Fig. A & Fig. B)
- B. Press the mode button and hold it down for five (5) seconds. The screen will advance to the set up menu and “1 F” or “Setting # 1” will appear on the screen. (Fig. C & Fig. D)
- C. Continue to press the mode button to advance to setup screen “6 0” or “Setting # 6”. (Fig. E & F)
- D. Press the up arrow to advance this setting to either “1” for Integrated Humidifier (mounted at Wine Guardian) or “2” for Freestanding Humidifier Unit. (Fig. G & H)
- E. Controller setup is complete.



Fig. A (TTW)



Fig. B (Ducted)



Fig. C (TTW)



Fig. D (Ducted)



Fig. E (TTW)



Fig. F (Ducted)



Fig. G (TTW)



Fig. H (Ducted)

Wine Guardian® Humidifier “Quick Start” Installation Guide

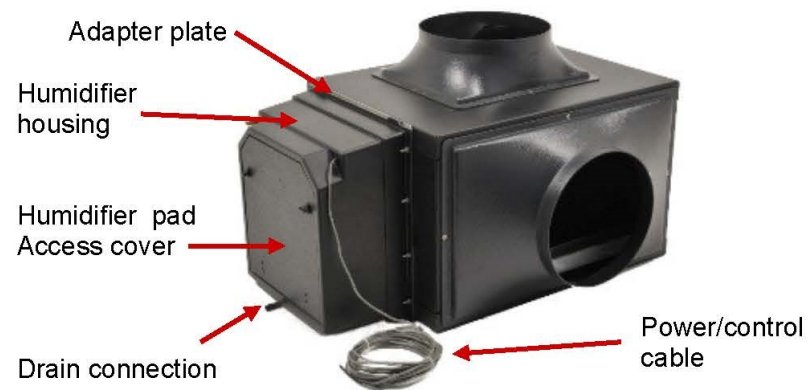
This document is a pictorial guide on installing the Wine Guardian humidifier system. It is not intended to replace the detailed instructions found in the WG Humidifier Installation, Operation and Maintenance (IOM) manual, which includes important safety messages all WG installers and owners should carefully follow for safe and optimal performance of the system.

Refer to the IOM manual for installation instructions related to duct collars and duct collar kits, optional remote interface control and remote sensors.

Front of Unit—Freestanding



Back of Unit—Integrated



Through Wall Mount



Wine Guardian® Humidifier Integrated and Freestanding



Quick Start Installation Guide

